

Overview Report

Sample Company

180 Sheree Blvd. Suite 2900, Exton, PA 19341



Survey Factor and Statement Summary

The survey measures six factors about the workplace. These are listed below in order of importance to employees. Your highest ranking factor is highlighted in **green** and your lowest scoring is highlighted in **red**.



Direction (16th)

- I believe this organization is going in the right direction
- I have confidence in the leader of this organization
- This organization operates by strong values and ethics
- Senior managers live the values of this organization



Execution (16th)

- Senior managers understand what is really happening in this organization
- I feel well-informed about important decisions concerning this organization
- At this organization we get things done quickly and well
- I clearly understand what I need to do to help this organization succeed



Conditions (14th)

- I have a great physical environment for the work I do
- I have the flexibility I need to balance my work and personal life
- There is not a lot of hostility at my workplace



Career (15th)

- I get the formal training I want for my career
- I have many opportunities to learn and grow at this organization.
- This organization rewards high performers



Managers (14th)

- My manager frequently praises good work
- My manager listens to me
- My manager makes good use of my skills
- It's easy to tell my manager the truth

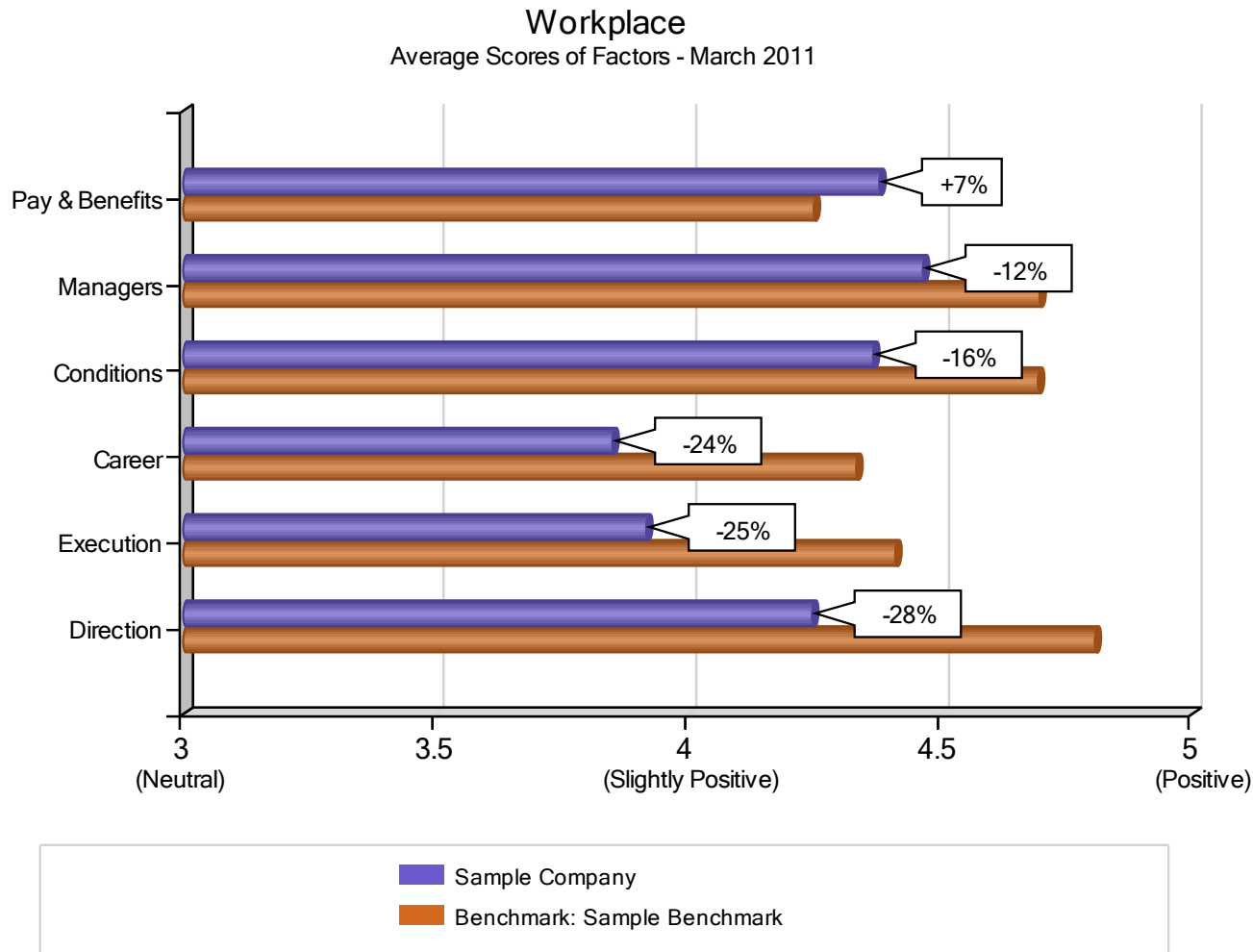


Pay & Benefits (4th)

- My pay is fair for the work I do
- My benefits package is good compared with others in this industry

Factors

The **blue** bars on this chart show **Sample Company's** average score on each factor. The **gold** bars provide a benchmark of the average score on each factor of the organizations named to the sample list.

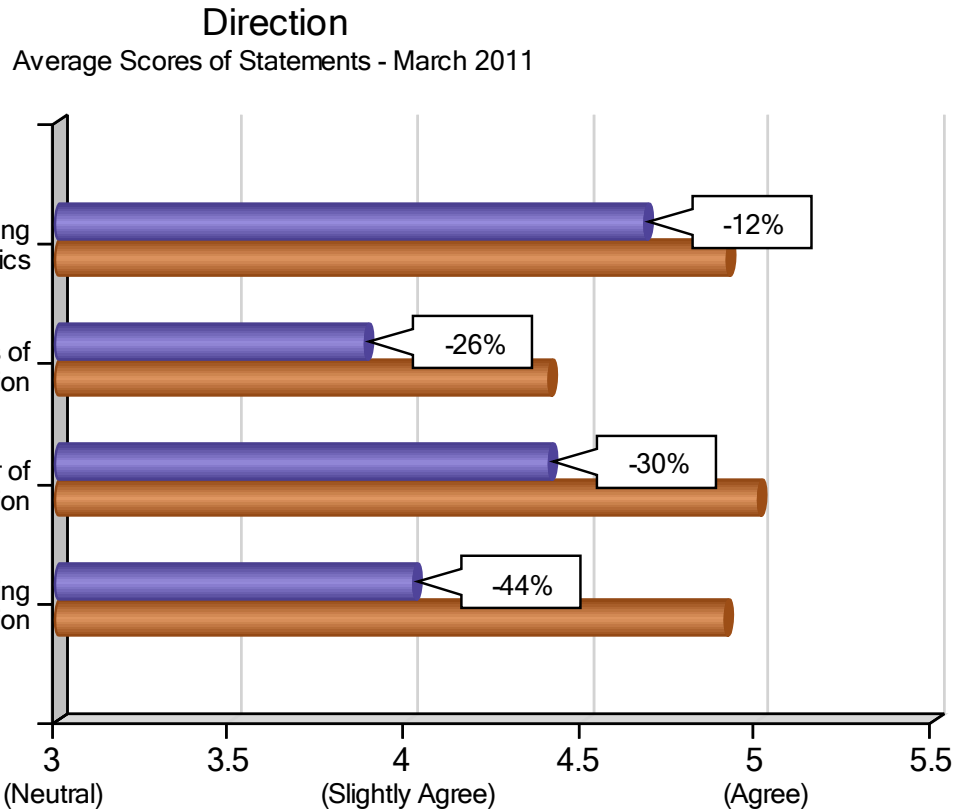


The rank shows the position your organization came in each factor out of 25 organizations in the sample employer category.



Direction

The **blue** bars on this chart show **Sample Company's** average score on each statement. The **gold** bars provide a benchmark of the average score on each statement of the organizations named to the sample list.



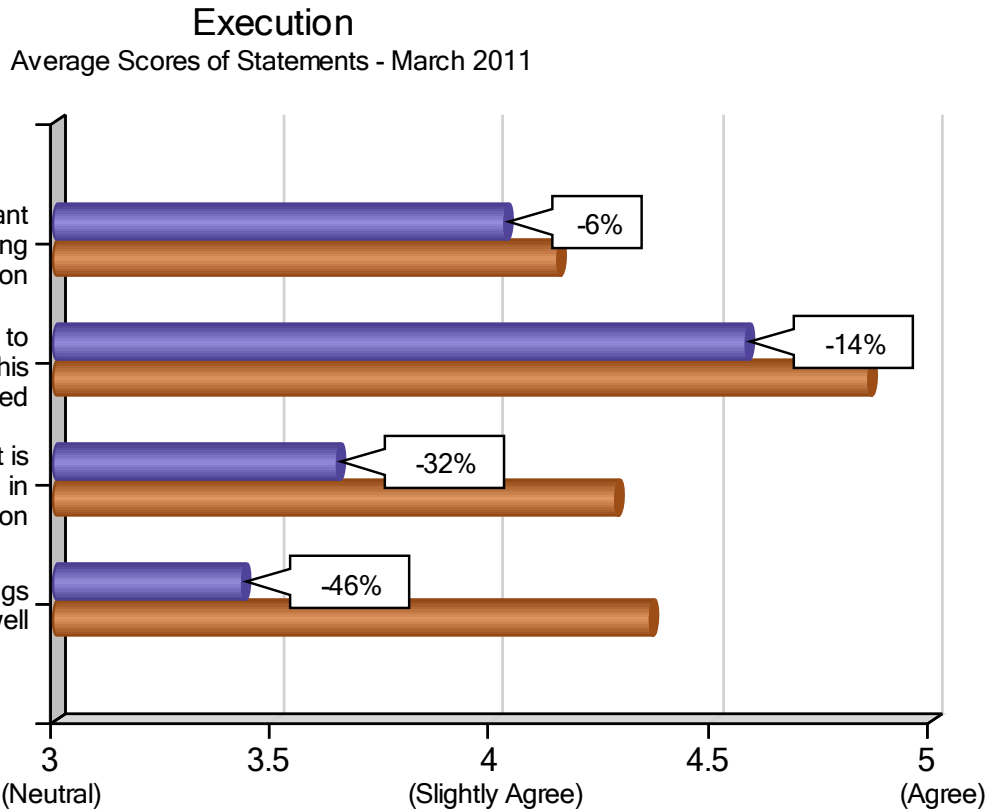
The rank shows the position your organization came in each factor out of 25 organizations in the sample employer category.





Execution

The **blue** bars on this chart show **Sample Company's** average score on each statement. The **gold** bars provide a benchmark of the average score on each statement of the organizations named to the sample list.



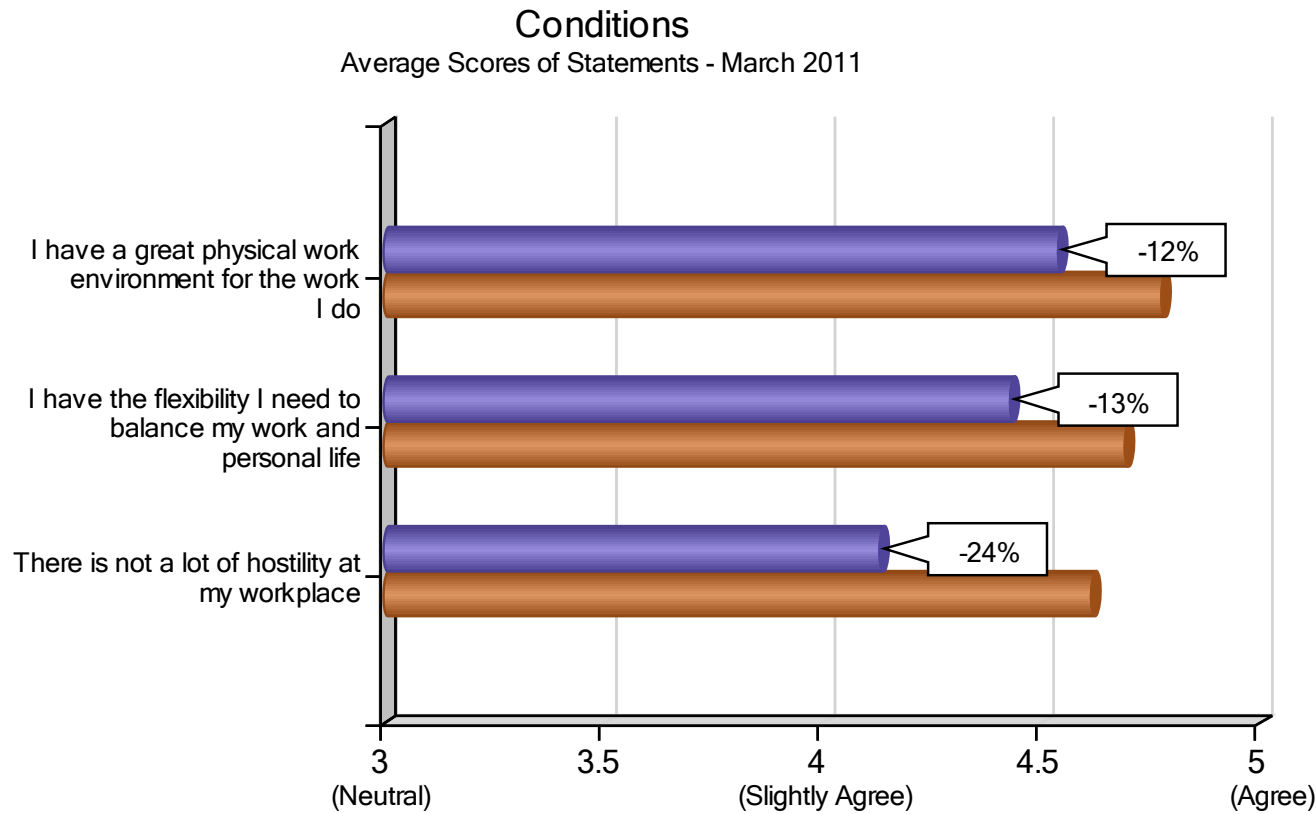
The rank shows the position your organization came in each factor out of 25 organizations in the sample employer category.





Conditions

The **blue** bars on this chart show **Sample Company's** average score on each statement. The **gold** bars provide a benchmark of the average score on each statement of the organizations named to the sample list.



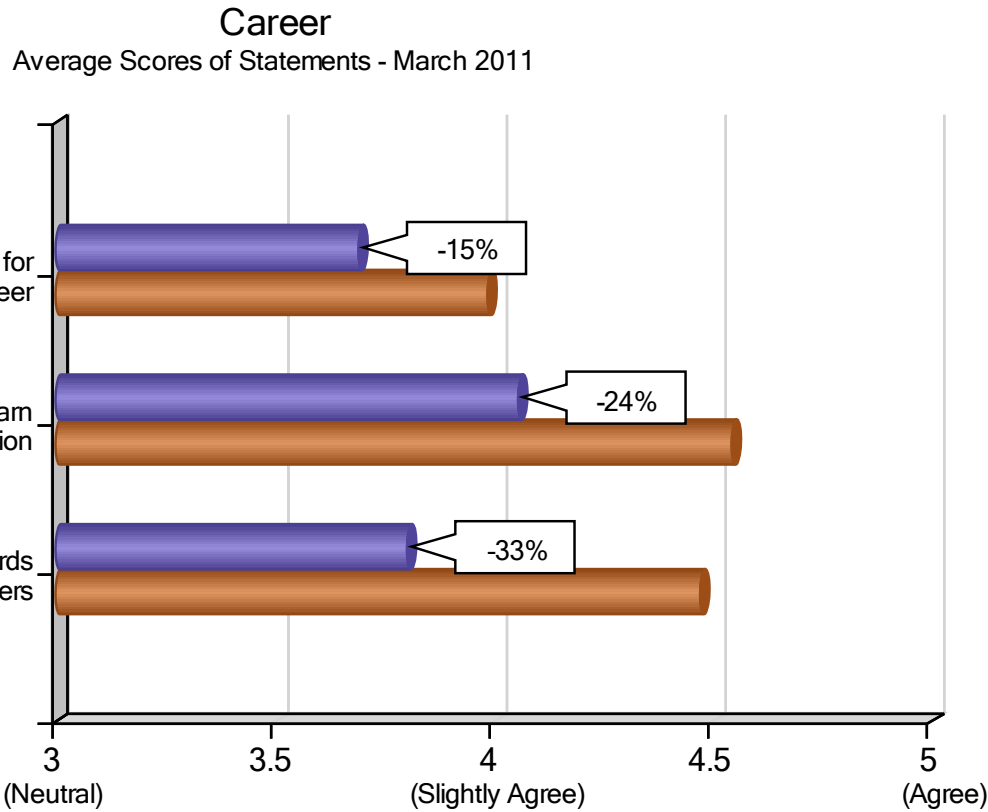
The rank shows the position your organization came in each factor out of 25 organizations in the sample employer category.



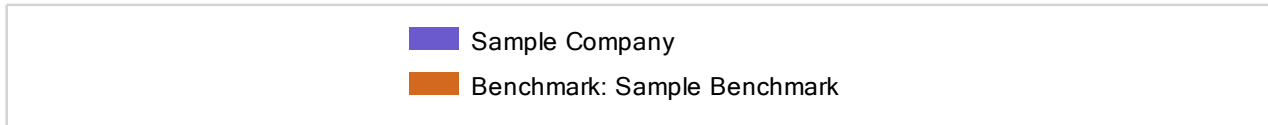


Career

The **blue** bars on this chart show **Sample Company's** average score on each statement. The **gold** bars provide a benchmark of the average score on each statement of the organizations named to the sample list.



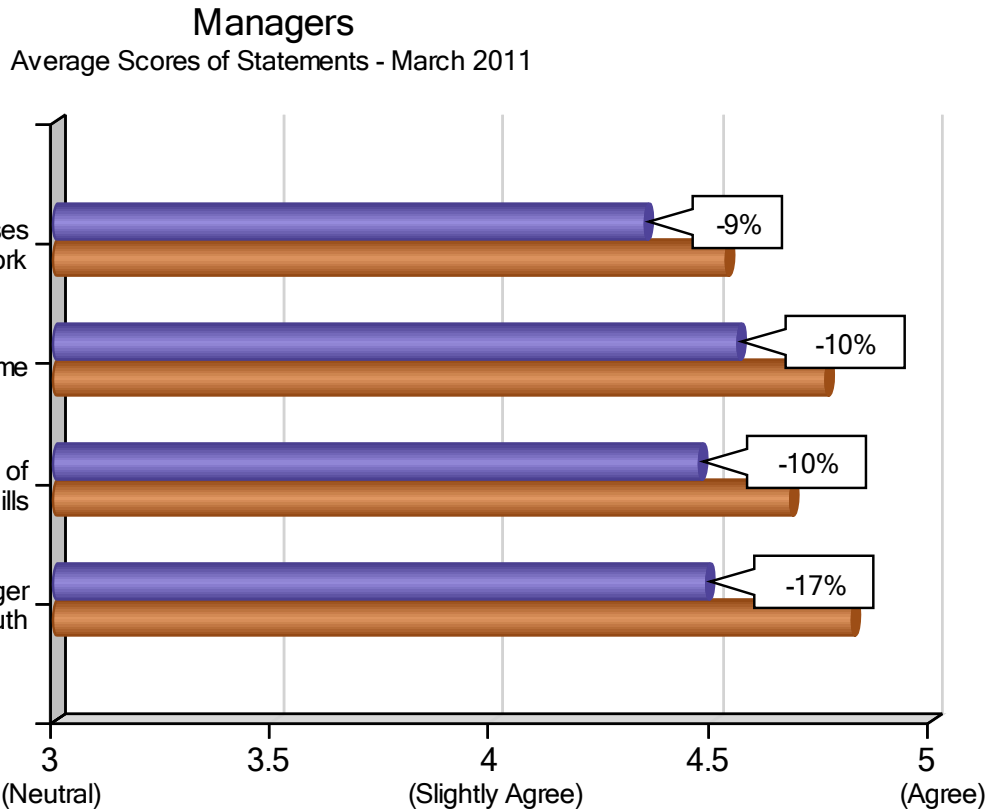
The rank shows the position your organization came in each factor out of 25 organizations in the sample employer category.





Managers

The **blue** bars on this chart show **Sample Company's** average score on each statement. The **gold** bars provide a benchmark of the average score on each statement of the organizations named to the sample list.



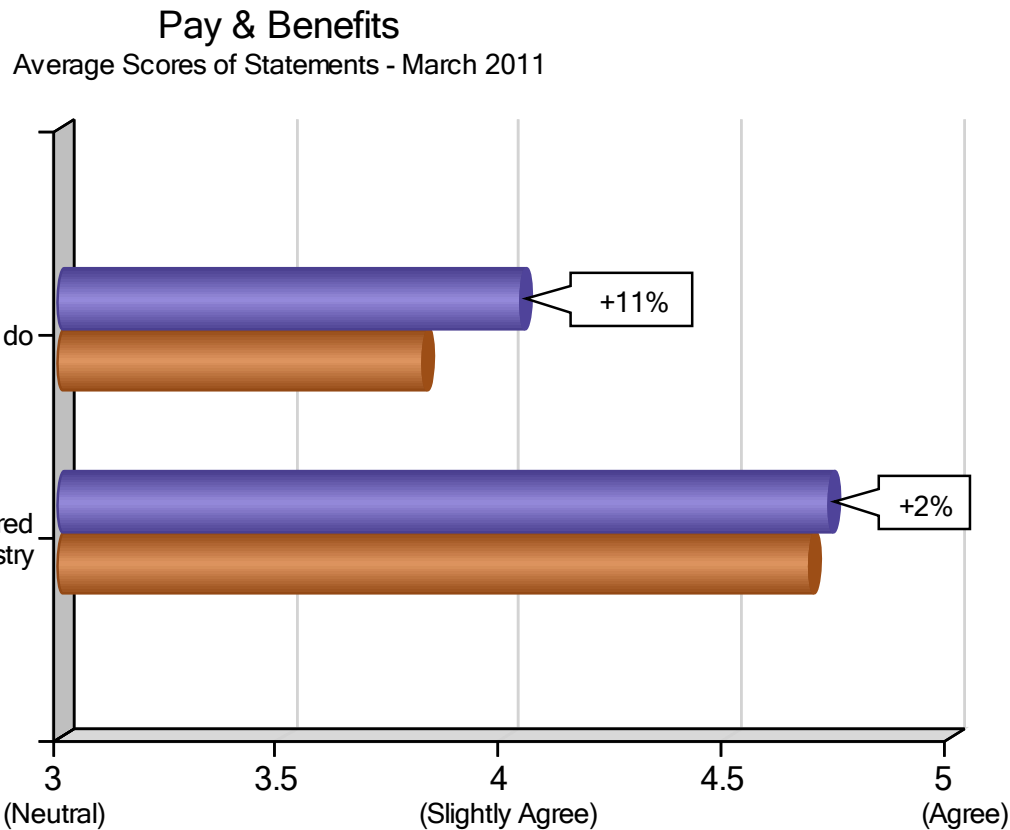
The rank shows the position your organization came in each factor out of 25 organizations in the sample employer category.





Pay & Benefits

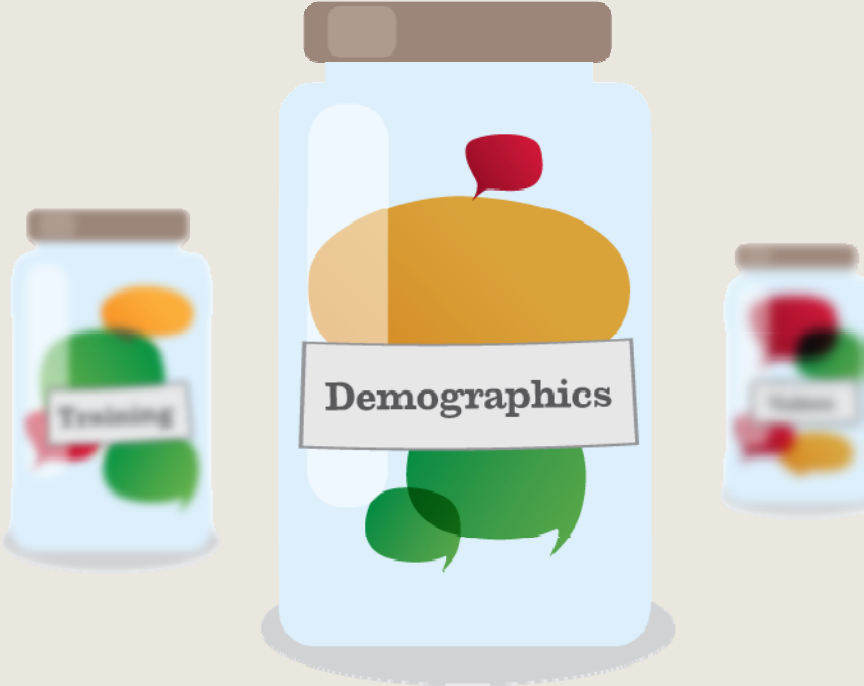
The **blue** bars on this chart show **Sample Company's** average score on each statement. The **gold** bars provide a benchmark of the average score on each statement of the organizations named to the sample list.



The rank shows the position your organization came in each factor out of 25 organizations in the sample employer category.

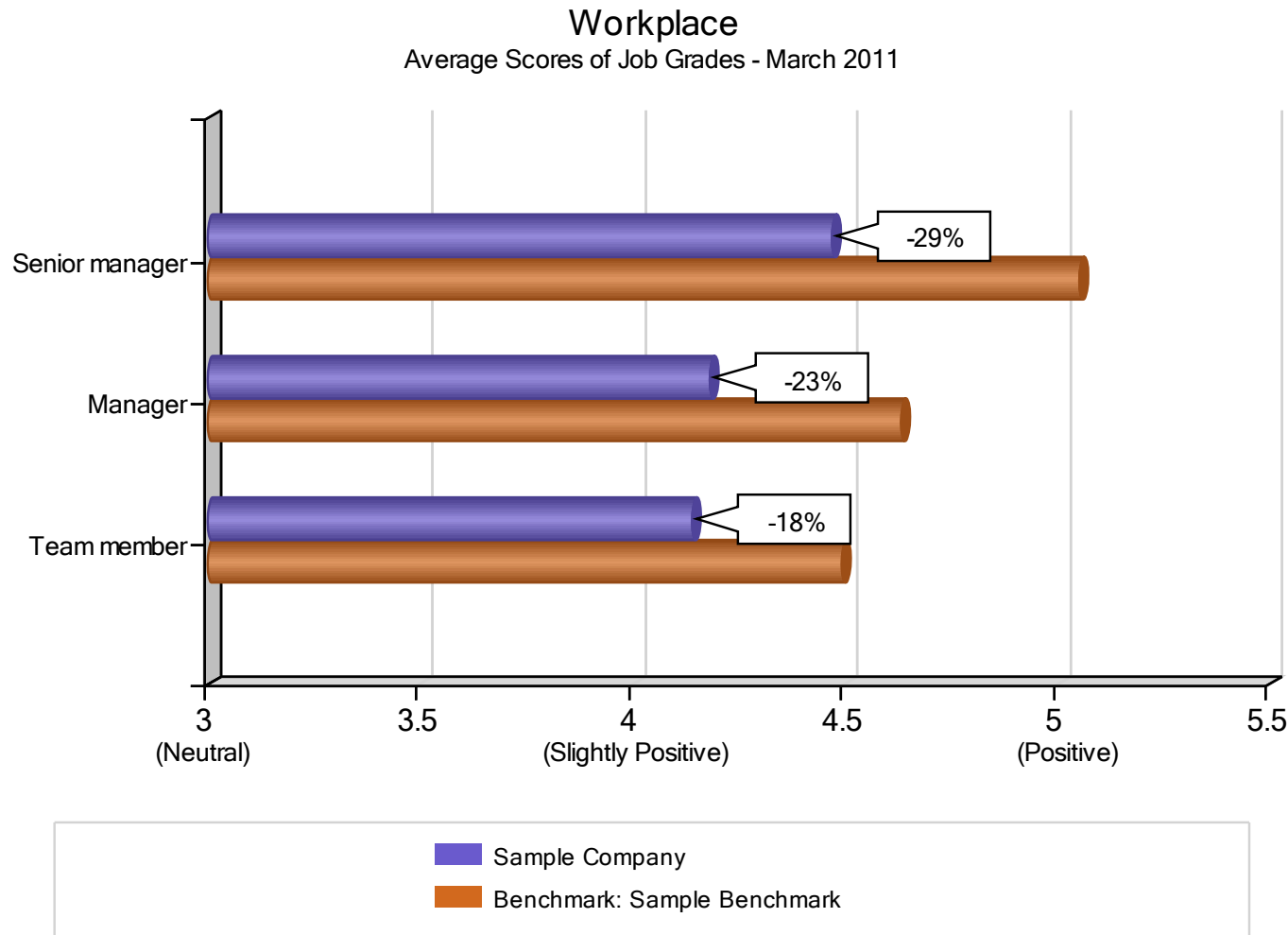


Results by Demographics



Job Grades

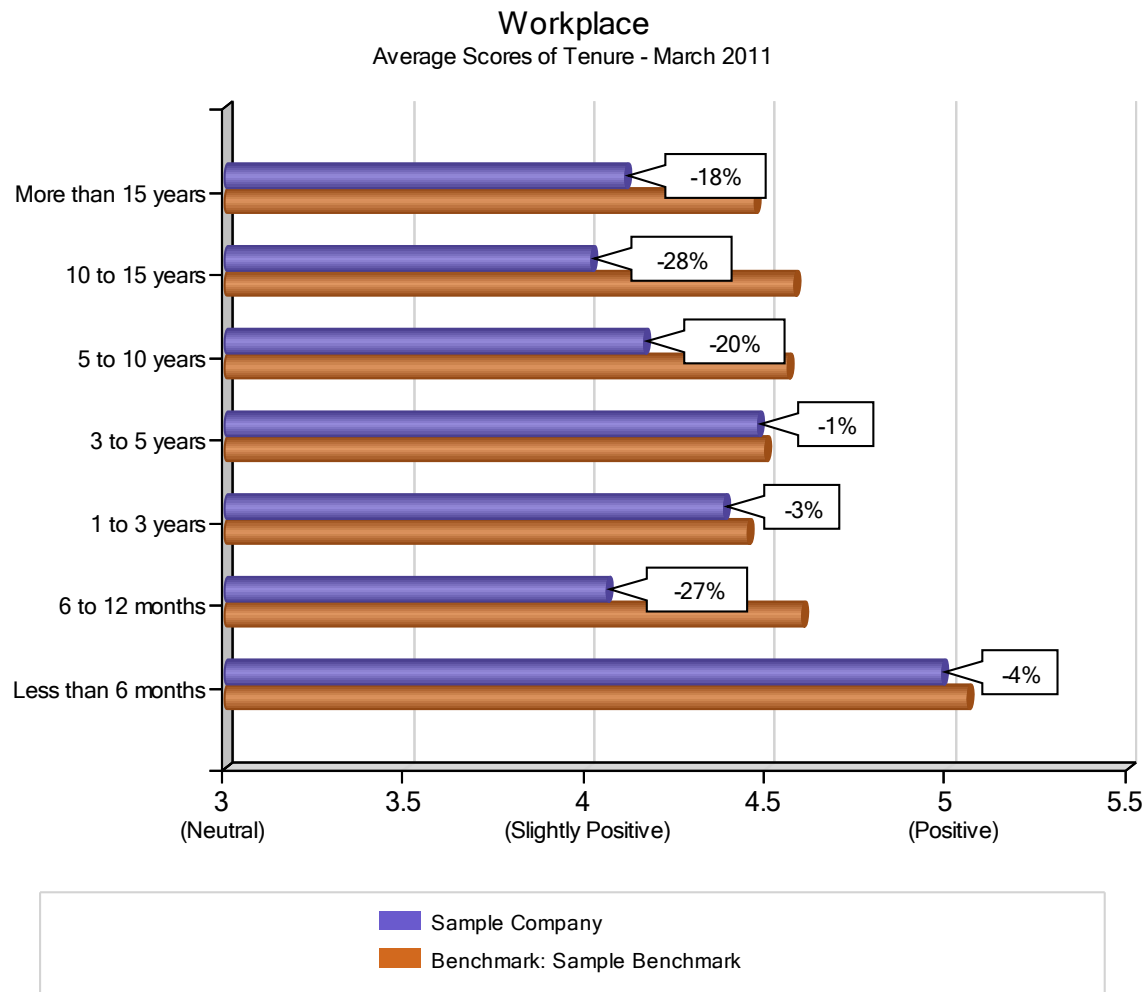
This chart shows **Sample Company's** score for each Job Grade compared to the benchmark of the organizations named to the sample list. Job Grades with fewer than six respondents are not shown.



The ranks show how each Job Grade compared to the same Job Grade across the 25 organizations in the sample employer category.

Tenure

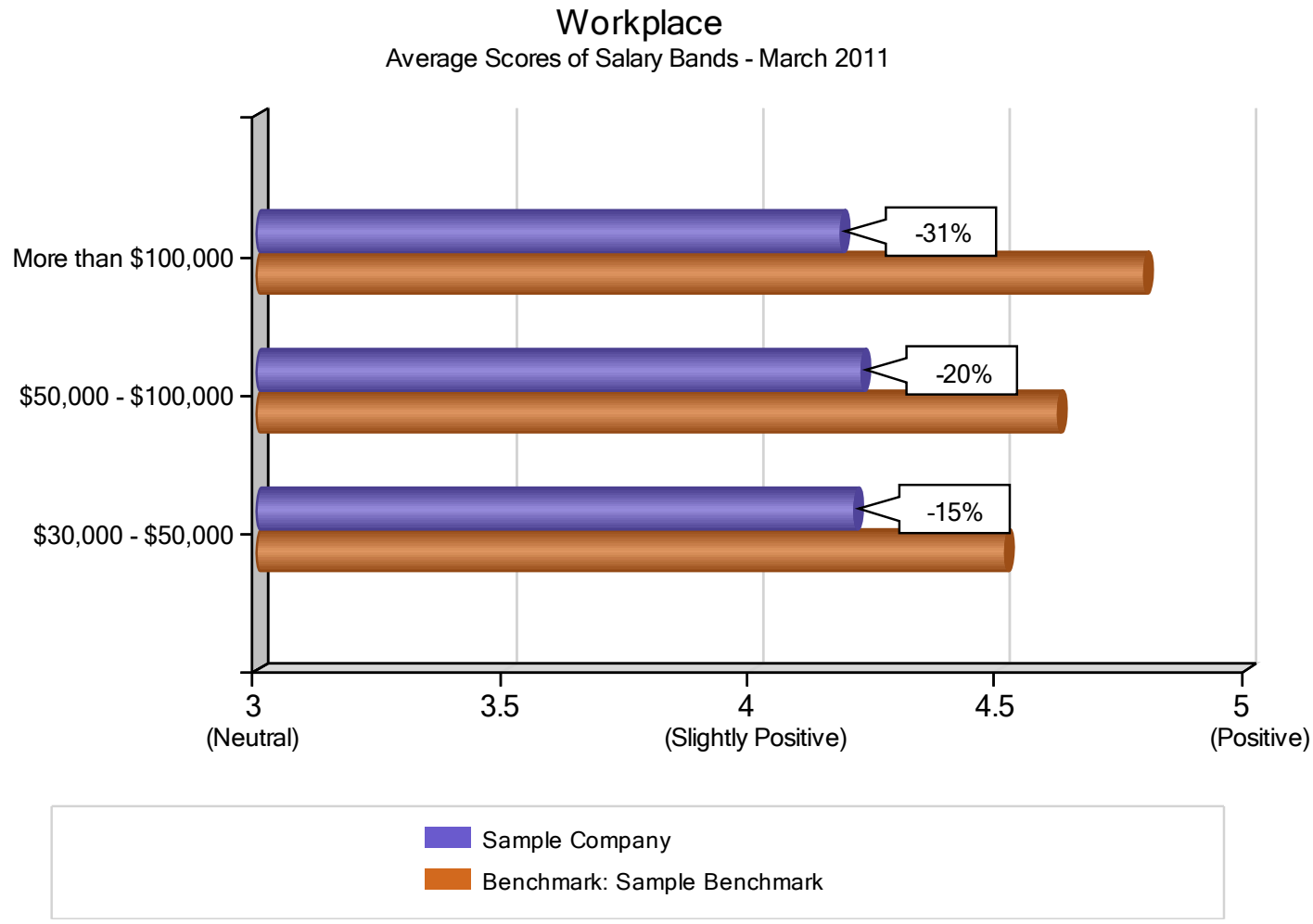
This chart shows **Sample Company's** score for each Tenure Band compared to the benchmark of the organizations named to the sample list. Tenure Bands with fewer than six respondents are not shown.



The ranks show how each Tenure Band compared to the same Tenure Band across the 25 organizations in the sample employer category.

Salary Band

This chart shows **Sample Company's** score for each Salary Band compared to the benchmark of the organizations named to the sample list. Salary Bands with fewer than six respondents are not shown.



The ranks show how each Salary Band compared to the same Salary Band across the 25 organizations in the sample employer category.

Results by Departments



Summary Department Results

We have highlighted in **green** and **red** your Top and Bottom scoring departments. The Percentages are relative to the average score of all responders at **Sample Company**.



Top Scoring Department:

Human Resources (+30%)

Other Departments:

Distribution
Finance
IT
Marketing
Production
Sales



Bottom Scoring Department:

Operations (-13%)

WorkplaceDynamics, LLP
180 Sheree Blvd., Ste 2900 | Exton, PA 19341
Tel: (800) 405-8381
Email: info@workplacedynamics.com
www.workplacedynamics.com

